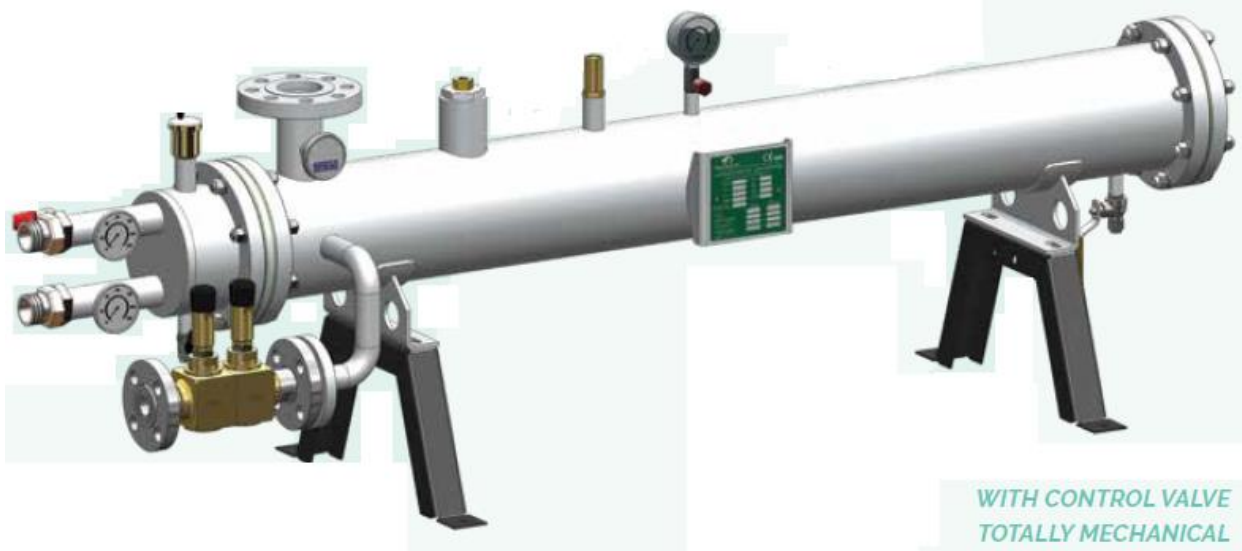


VAPEG

ALL ONE SETUP FOR ALL LPG MIXTURES

SUITABLE FOR HUGE CAPACITIES

REMOVABLE TUBE BUNDLE
HEAT EXCHANGER

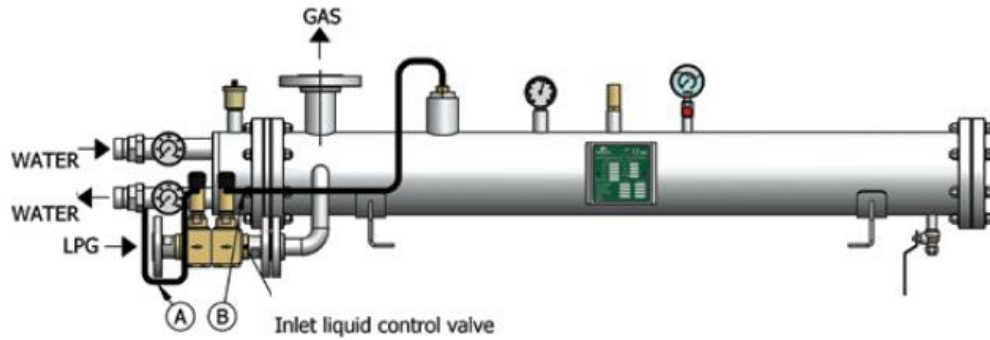


WITH CONTROL VALVE
TOTALLY MECHANICAL

HORIZONTAL EXECUTION

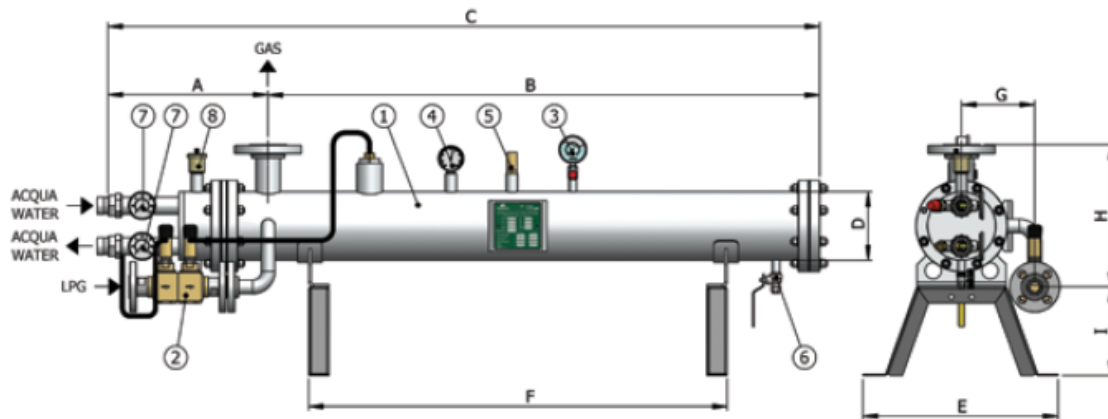
EASY SERVICING

ASSEMBLY INLET LIQUID VALVE ON VAPEG



- A. Water temperature control
- B. Gas temperature control

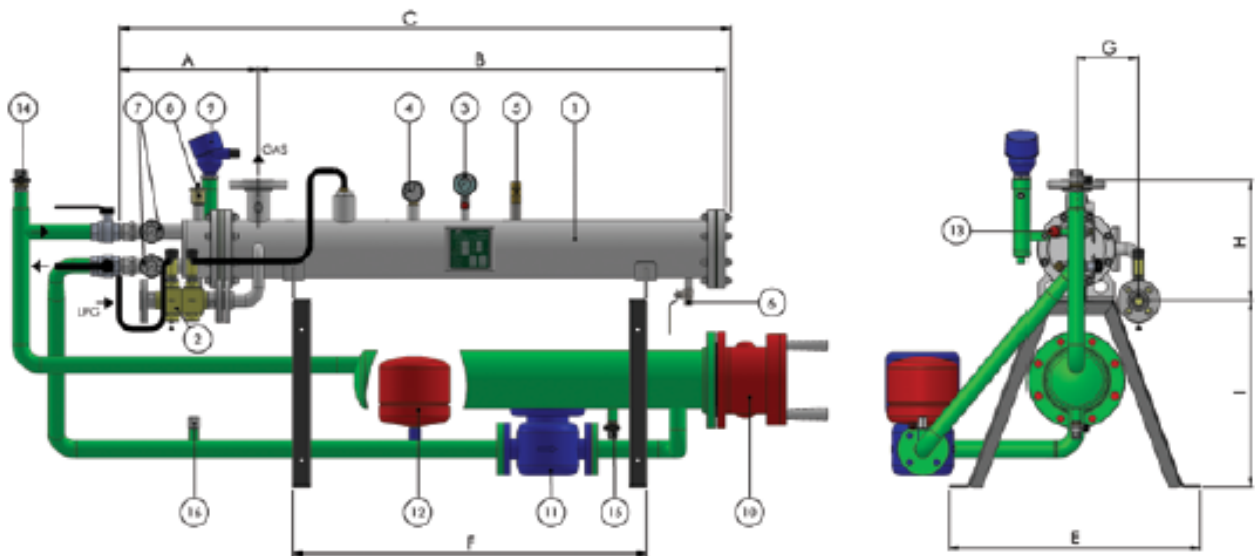
VAPEG HOT WATER VAPORIZER



- 1. Vaporizer
- 2. Inlet liquid control valve
- 3. Gas pressure gauge
- 4. Gas thermometer
- 5. Gas safety valve
- 6. Gas drain valve
- 7. Water thermometer
- 8. Air vent

MAIN FEATURES AND DIMENSIONS						
Tipo / Type	200A	300A	500A	1000A	1500A	2000A
<i>Flow rate [Kg/h]</i>	200	300	500	1000	1500	2000
<i>A [mm]</i>	370	390	395	470	470	470
<i>B [mm]</i>	730	1080	1360	1320	1805	2315
<i>C [mm]</i>	1110	1470	1755	1790	2275	2785
<i>D [mm]</i>	141	141	168	219	219	219
<i>E [mm]</i>	475	475	475	550	550	550
<i>F [mm]</i>	450	750	1030	780	1275	1750
<i>G [mm]</i>	180	180	180	230	230	230
<i>H [mm]</i>	300	350	350	460	460	460
<i>I [mm]</i>	255	215	215	300	300	300
<i>Dn Gas In (Rating Ansi300)</i>	1"	1"	1"	2"	2"	2"
<i>Dn Gas Out (Rating Ansi300)</i>	1"	1½"	2"	3"	3"	3"
<i>Water In/out</i>	1¼"	1¼"	1¼"	2"	2"	2"
<i>Gas Volume [Lt]</i>	5,4	8	14,7	24,8	33,1	42,1
<i>Water Volume [Lt]</i>	2,2	3,3	5,8	10,8	14,2	18
<i>Hot water boiler power [KW]</i>	30	45	76	151	227	302
<i>Indicative Weight [Kg]</i>	90	125	155	260	310	360
<i>Gas Side [Bar]</i>	20	20	20	20	20	20
<i>Water Side [Bar]</i>	8	8	8	8	8	8
<i>Gas Side [Bar]</i>	-40 / +120					
<i>Water Side [Bar]</i>	-10 / +105					

ELECTRIC VAPORIZER



- | | |
|----------------------------------|--------------------------|
| 1. Vaporizer | 10. Electrical heater |
| 2. Control valve | 11. Water pump |
| 3. Gas pressure gauge | 12. Expansion tank |
| 4. Gas thermometer | 13. Water safety valve |
| 5. Gas safety valve 18 bar | 14. Water filling valve |
| 6. Gas drain valve | 15. Water drain valve |
| 7. Water thermometer | 16. Water Pressure gauge |
| 8. Air vent | |
| 9. Water level switch (optional) | |

MAIN FEATURES AND DIMENSIONS					
Type	200E	300E	500E	1000E	1500E
<i>Flow rate [Kg/h]</i>	200	300	500	1000	1500
<i>A [mm]</i>	370	390	395	470	470
<i>B [mm]</i>	730	1080	1260	1320	1805
<i>C [mm]</i>	1110	1470	1755	1790	2275
<i>D [mm]</i>	141	141	168	219	219
<i>E [mm]</i>	520	520	580	580	580
<i>F [mm]</i>	450	750	1030	780	1275
<i>G [mm]</i>	180	180	180	230	230
<i>H [mm]</i>	300	300	350	460	460
<i>I [mm]</i>	480	480	458	557	557
<i>L [mm]</i>	1581	2185	2372	2419	
<i>M [mm]</i>	691	691	911	766	766
<i>Dn Gas In (Rating Ansi300)</i>	1"	1"	1"	2"	2"
<i>Dn Gas Out (Rating Ansi300)</i>	1"	1½"	2"	3"	3"
<i>Water In/out</i>	1¼"	1¼"	1¼"	2"	2"
<i>Gas Volume [Lt]</i>	6,0	9,3	15,7	24,8	33,1
<i>Water Volume [Lt]</i>	31	35	45	84	105
<i>Electric Power [Kw]</i>	32	48	80	160	240
<i>Voltage [V]*</i>	400 3ph	400 3ph	400 3ph	400 3ph	400 3ph
<i>Indicative Weight [Kg]</i>	160	250	300	500	595
<i>Gas Side [Bar]</i>	20	20	20	20	20
<i>Water Side [Bar]</i>	8	8	8	8	8
<i>Gas Side [Bar]</i>	-40 / *120				
<i>Water Side [Bar]</i>	-10 / *105				