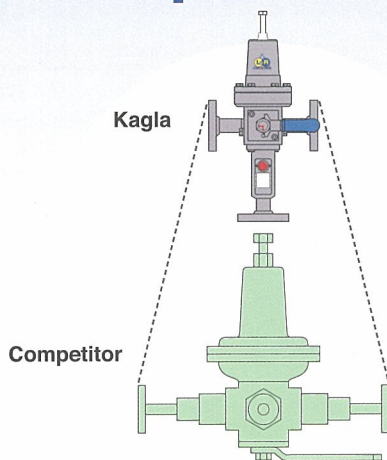




Compact Light weight and Simple Operation

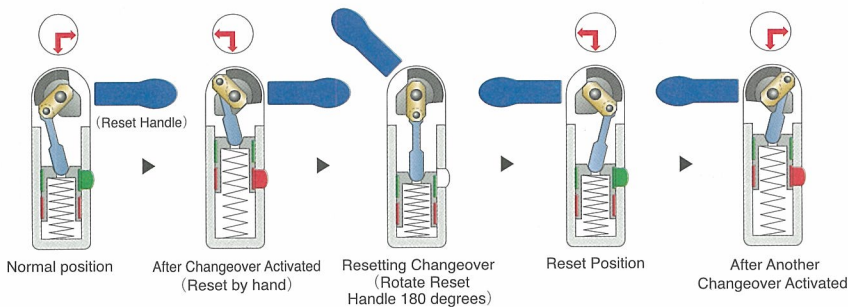
1 Compare it!



2 Snap Reverse Mechanism

The LR employs "Snap Reverse Mechanism" that features dust-proof and rain-proof construction.

LR is the simplest and most reliable form of liquid automatic changer, realizing highly accurate and instantaneous changeover operation.



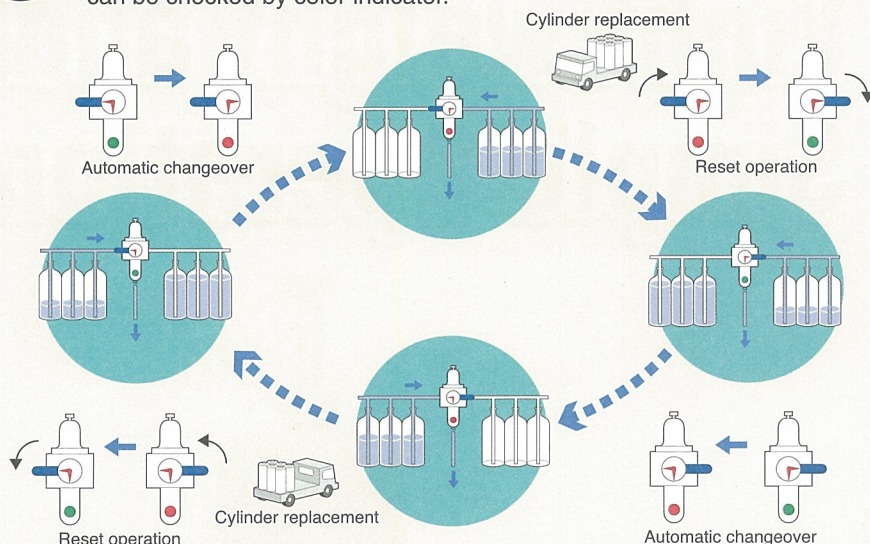
ISO9001:2000



3

Double Indication

Red arrow indicates which line being in use, and changeover activation status can be checked by color indicator.



4

Perfect Compatibility

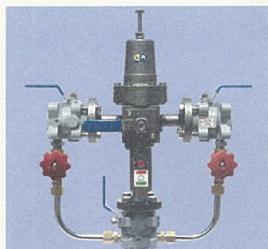
The body becomes compact. It allows to replace the liquid automatic changer currently in use irrespective of the manufacturer and type.

5

Easy Local Maintenance

The use of a simple structure allows disassembly and assembly to be performed easily at the site.

Options



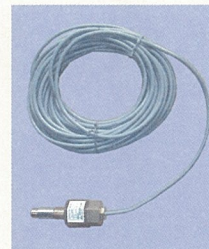
LR Unit

It is a compact unit with bypass line pre-installed. The maintenance of LR can be performed without stopping the supply of LP gas, as well as the installation work will be easy.



LR Panel

Only installing the LR panel in the office, it notifies the change of LR detected by buzzer and lamp.



Explosion-Proof Signal Transmitter Switch

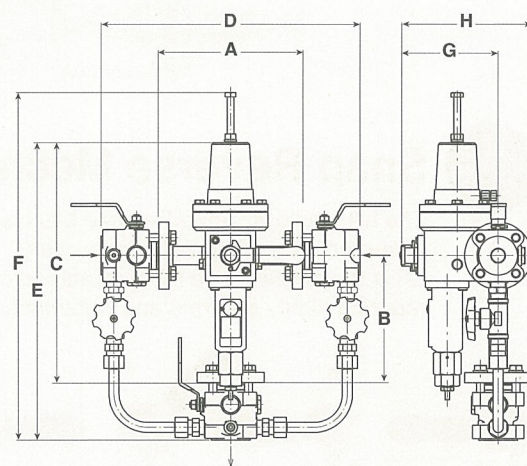
An optional explosion-proof signal transmitter switch can be installed. (model: LR-SSF) It enables LR to be monitored changeover activation through a telephone line.

Specifications

Name	LR	LR Unit
Standard type	LR-SF-I · LR-SF-II	LRU-SF-I · LRU-SF-II
Signal transmitter type	LR-SSF-I · LR-SSF-II	LRU-SSF-I · LRU-SSF-II
Certified Explosion-Proof Product	Type of Explosion-Proof Construction : Exd II AT5	
Optional	Contact rating : DC100V / AC100V 0.5A	
Fluid	LPG	
Capacity	Max.300 kg/h (at P 100%)	
	Max.150 kg/h (at P 30% or less)	
Changeover pressure	Type I : 0.05~0.22 MPa (0.5~2.2 kg/cm ²) Type II : 0.15~0.34 MPa (1.5~3.4 kg/cm ²)	
Changeover pressure operating accuracy	±0.01 MPa (±0.1 kg/cm ²) (Changeover pressure+ΔP)~1.56 MPa (15.6 kg/cm ²)	
LPG liquid inlet required pressure	Cap.	100 150 200 250 300
	ΔP MPa	Type I : 0.03 0.07 0.11 0.14 0.18
	Type II : 0.06 0.08 0.11 0.15 0.18	
Liquid inlet size	20 A JIS20 K	
Liquid outlet size	20 A JIS20 K	
Weight	13 kg	20 kg
LR Panel (Optional)	Size : 90 (W)×170(H)×60(D) 1500g Voltage : AC 100V External output contact : AC200V 5A DC24V 1A Minimum applicable load : DC 5V 1mA	

●The specifications are subject to change without notice.

Dimensions



(mm)							
A	B	C	D	E	F	G	H
215	190	360	385	445	510	145	195

LR Dimensions - A, B, C, G, H

LR Unit Dimensions - D, E, F, G, H

KAGLA INBEST CORPORATION

2-1, 1-chome, Tachibana-cho, Amagasaki 661-0025, Japan
Phone:81-6-6429-2696 (direct call) Fax:81-6-6422-0134

URL <http://www.kagla.co.jp>

Distributor: